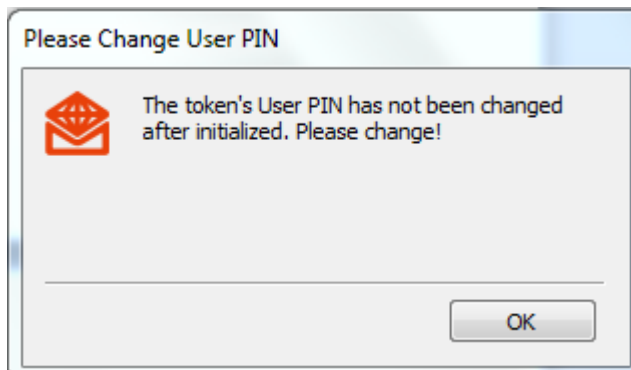


Metrobank Corporate Internet Banking First Time Login

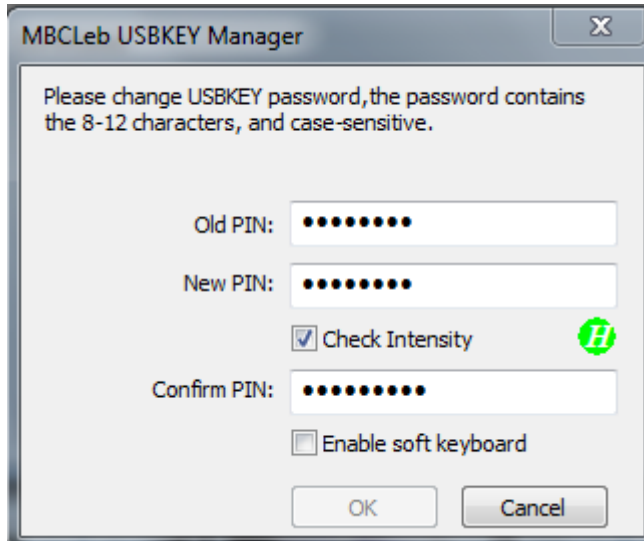
Dear customer,

Hello! Welcome to Metrobank Internet Banking. Please follow the steps below to complete the initial login process.

(1) On your initial use, please plug in the USBKEY to the USB port on your computer. The computer will automatically run the installation software. After installation is completed, the system will show a dialog box that prompts you to modify the USBKEY password. The initial password is **12345678**. Please modify USBKEY password immediately. The specific steps are as follows:



①

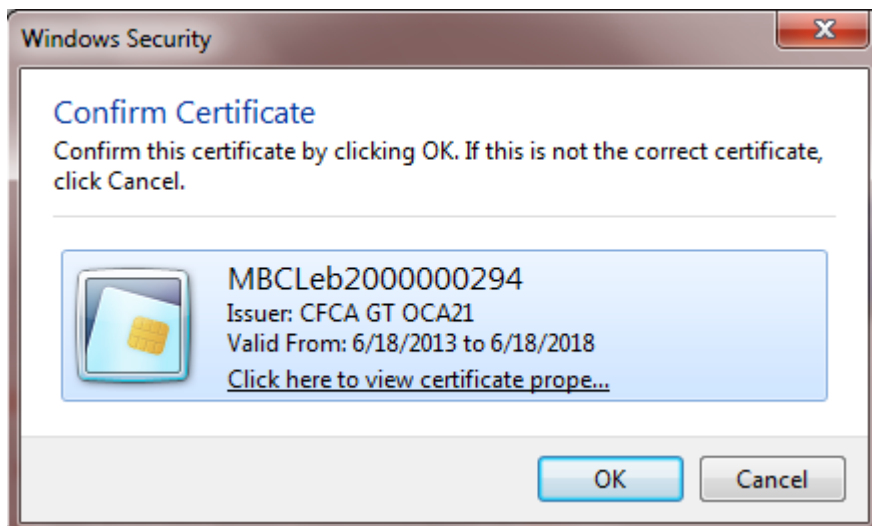


②



③

(2) The Internet Explorer (IE) browser will automatically open the home page of Metrobank. Alternatively, you can manually open an IE browser, type www.metrobank.com.cn on the address bar to enter our home page. Click on "Corporate Internet Banking". There will be a pop up window of the digital certificates. Select the certificate to use, and click "OK".

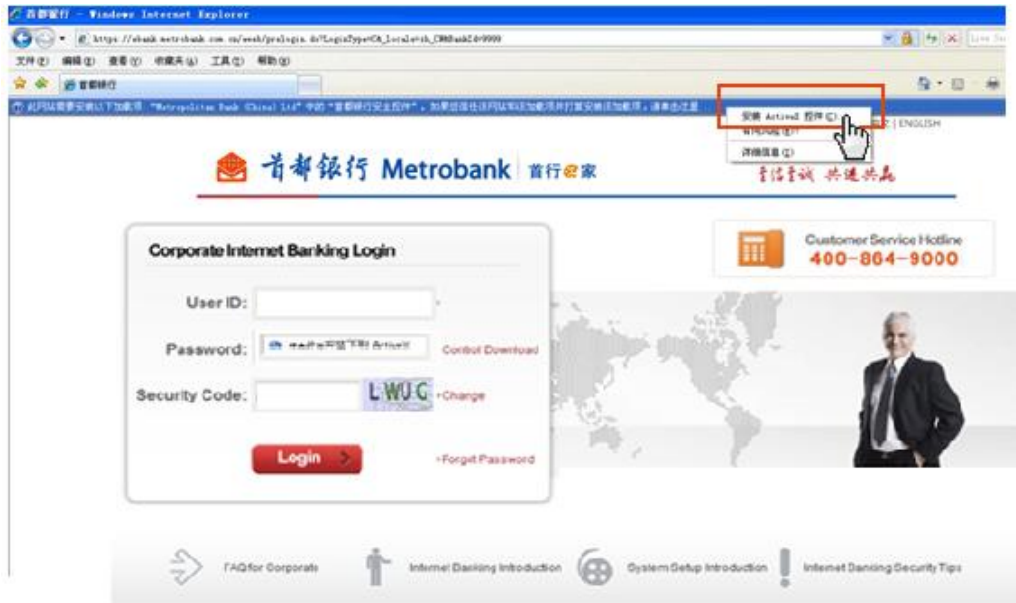


(3) The following window will pop up on your computer screen. You can choose to input the USBKEY password via the keyboard or the soft keyboard.



(4) After entering the USBKey password, the system will bring you to the login page of the Corporate Internet Banking. To ensure the security of customer information, the IE browser information bar will

show a reminder for you to install the security controls. Click "Install" to complete the security controls installation process. Alternatively, you can also manually click "Controls Download" to install. After installation, the page will refresh automatically.

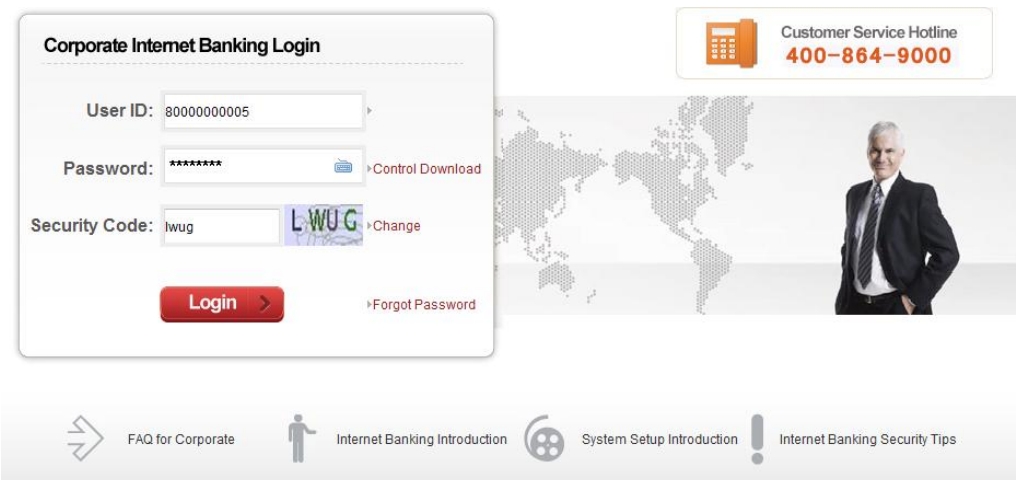


①



②

简体中文 | ENGLISH



③

(5) On the Confirmation page you need to input the password printed on the password envelope and the dynamic verification that you received via your mobile phone. On this page you must set up your login password. (Login password is comprised of 8-15 characters, a combination of letters and numbers. The password is case sensitive.) After all the information have been entered, click "Submit"



Processor ID 80000000006

Original Login Password *****

New Login Password *****

Confirm New Login Password *****

Dynamic Verification Code 265878 **8Second**

Submit

Copyright © 2013 Metrobank (China). All rights reserved.

(6) The following window will pop up on the computer screen. You can choose to input the USBKEY password via the keyboard or the soft keyboard.

Verify user pin

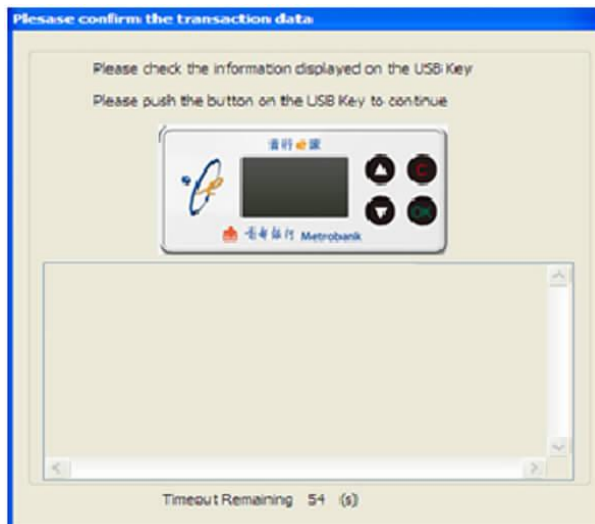
Please input USBKEY password, the password contains the 8-12 characters, and case-sensitive.

USBKEY PWD:

Enable soft keyboard

Verify Cancel

(7) After the USBKEY password is entered and the "OK" button pushed, the following window will pop up. This window prompts you to confirm the transaction via the USBKEY.



(8) Once you finish the first time login process, you can already go back to Corporate Internet Banking Professional Edition login page.



Change of Password is successful! Please [re-login](#)

Tips:

1. Please click on the "re-login" to return to the corporate Internet Banking login Page.

(9) Enter the user ID, password and verification code (captcha) on the login page, and click "Login" to enter the Metrobank Corporate Internet Banking system.


简体中文 | ENGLISH




Corporate Internet Banking Login

User ID:

Password: [Control Download](#)

Security Code:  [Change](#)

[Forgot Password](#)

 Customer Service Hotline
400-864-9000

